

SPECIFICATION

2.ELECTRICAL PERFORMANCE

A: Primary Rated Voltage and Frequency:120VAC 60Hz

B. Secondary Rated Voltage and Current:

Test point	Full load rated voltage	Rated current	Voltage regulation	No load voltage
(3-4)	AC 24V \pm 10%	AC 210mA		AC29 \pm 10

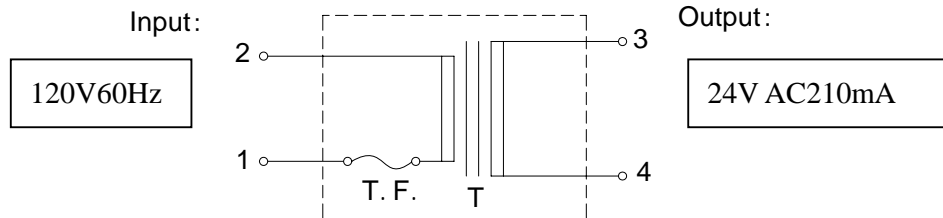
C. Safety Standard UL&CUL (Pending)

D. Primary Current (I o) : 50mA rms Max. @ Input 120V AC 60Hz (120V,60Hz,50mA)

E. HI-POT Test: 1240VAC for one minute (or 1500VAC for one second) between input ac plug and output ac plug, case leak current 1mA.((1240VAC,1) (1500VAC,1),1mA)

F. *Energy Star Compliant.*

G. Circuit Diagram:



Symbol	Part Name	Specification	Q' TY
T	Transformer	EI-41*17	1
T. F		2A,115°C	1

SPECIFICATION

3. Sample Chart:

Picture of transformer

