

## SPECIFICATION

### 2.ELECTRICAL PERFORMANCE

A: Primary Rated Voltage and Frequency:120VAC 60Hz

B. Secondary Rated Voltage and Current:

Test point	Full load rated voltage	Rated current	Voltage regulation	No load voltage
(3-4)	AC 24V $\pm$ 10%	AC 1250mA		AC27 $\pm$ 10

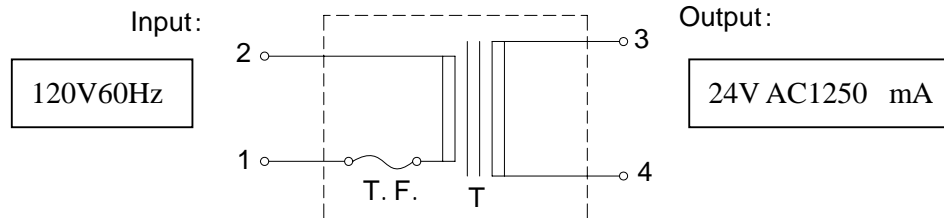
C. Safety Standard      UL&CUL    (Pending)

D. Primary Current ( I<sub>o</sub> ) : 50mA rms Max. @ Input 120V AC 60Hz (120V,60Hz,80mA)

E. HI-POT Test: 1240VAC for one minute (or 1500VAC for one second) between input ac plug and output ac plug, case leak current 1mA.((1240VAC,1) (1500VAC,1),1mA)

F. *Energy Star Compliant.*

G. Circuit Diagram:



Symbol	Part Name	Specification	Q' TY
T	Transformer	EI-57*30	1
T. F		2A,115°C	1

## SPECIFICATION

### 3. Sample Chart:

Picture of transformer

